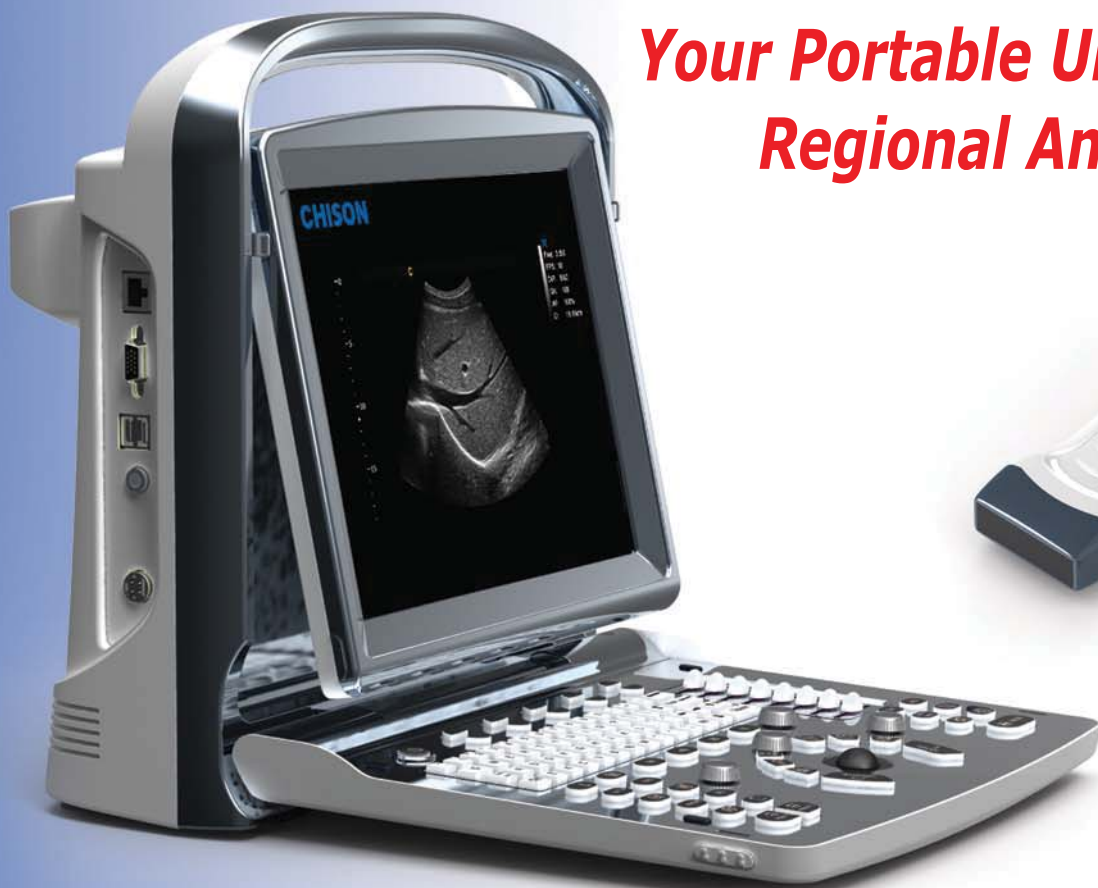


# ECO1

**Scanner with Linear Probe 5-11MHz**

***Your Portable Ultrasound for  
Regional Anesthesia***



**Features:**

- Presets for Regional Anesthesia, etc.
- Backlit Keyboard
- Ports (LAN/USB/VGA/S-Video)

**CASH Php 199,000.00**

**Optional:**

- Convex Probe - Php 106,000.00
- Battery Pack - Php 27,000.00
- Foot Switch - Php 6,000.00

**Terms:** Php 100,000.00 Downpayment  
Balance Php 10,000/month payable in 1 year covered by PDC's.

**Delivery:** Within 30 days from receipt of downpayment.  
Free delivery within Metro Manila.

**Printer:**

- Can save reports from ultrasound to a PC using network storage then print from the PC.

Exclusively Imported and Distributed by:



**AAA PHARMA INC.**

105 Maryland St., Cubao, Quezon City

Tel. No. : (02) 726-8715 / (02) 727-7822

E-mail : [info@aaapharma.net](mailto:info@aaapharma.net)

Website : [www.aaapharma.net](http://www.aaapharma.net)

## Key Benefits

- High resolution images
- 12" LED High resolution screen.
- Compact, slim and easy to transport (with carrying case)

## Applications

- Regional Anesthesia
- Fetal/OB
- Abdominal
- Pediatric
- Small Parts
- MSK

## Carotid Artery



Normal



SRA

## Technical Specifications

Display Modes	B,B/B,4B,M,B/M
Gray Scale	256 Levels
Scanning Depth	74mm Max
Standard Configuration	Main unit + 5-11 MHz Linear Probe L7S-A + 1 probe connector+ 3 USB ports + VGA port + Video port + LAN port Full Screen Display Mode, i-Image, Chroma SRA, THI 8G memory card